



2018 12

1958 9

4300

10317

10552

56.46

24.44

4.31

10007.86

816

550

78

149

26

394

14

39

2

3

TRIZ

2017

11

--

TRIZ

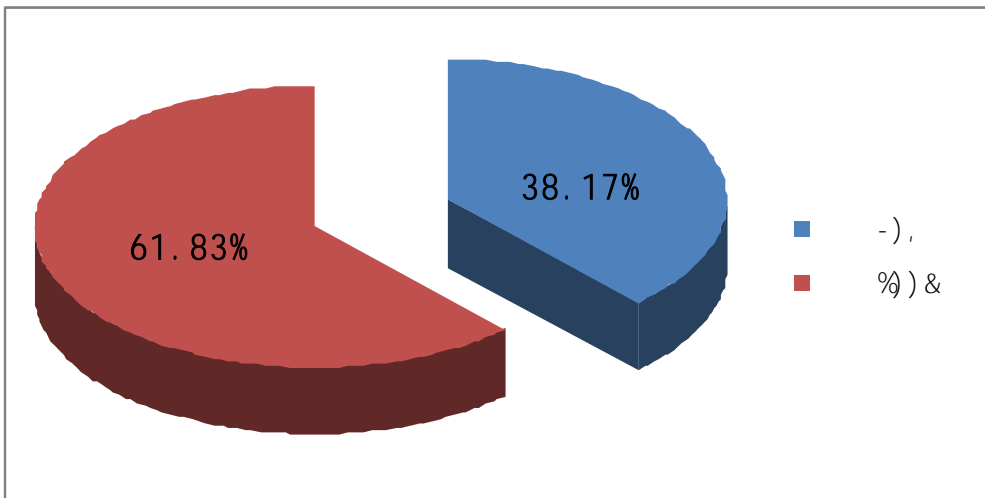
100

121

1.

2018 2510 958
38.17% 1552 61.83% 1:1.62

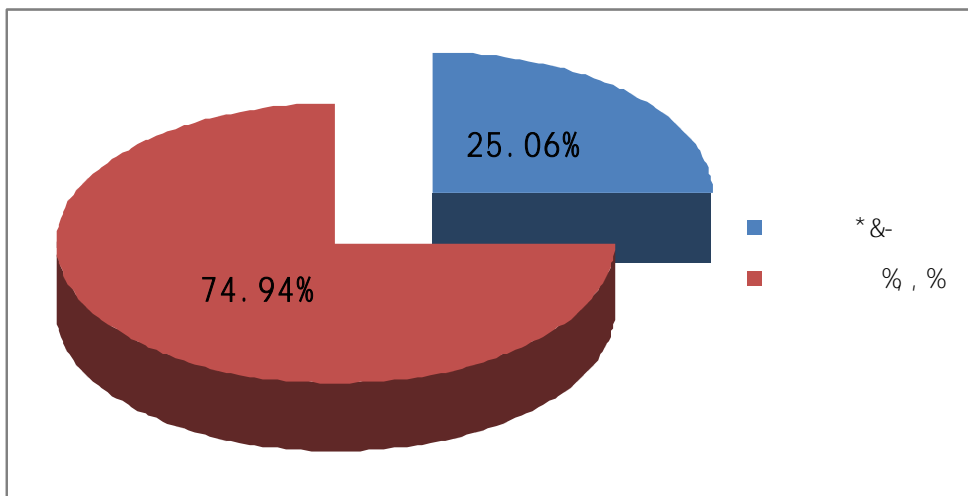
2018



2.

2018 1881 74.94%
629 25.06%

2018



4.

2018

		145	5.78%
		73	2.91%
		73	2.91%
		42	1.67%
		35	1.39%
		88	3.51%
		122	4.86%
		133	5.30%
		40	1.59%
		33	1.31%
		33	1.31%
	()	48	1.91%
		36	1.43%
		52	2.07%
		85	3.39%
		76	3.03%
	()	86	3.43%
		85	3.39%
		28	1.12%
		145	5.78%
		30	1.20%
		36	1.43%
		58	2.31%
	()	59	2.35%

[2004 7]

= ...

y 100%

[2013 1]

= +

+ + + + +

+ + + + +

= + +

+ + + + +

+ +

1.

2018 8 31

2018

33

2510

2394

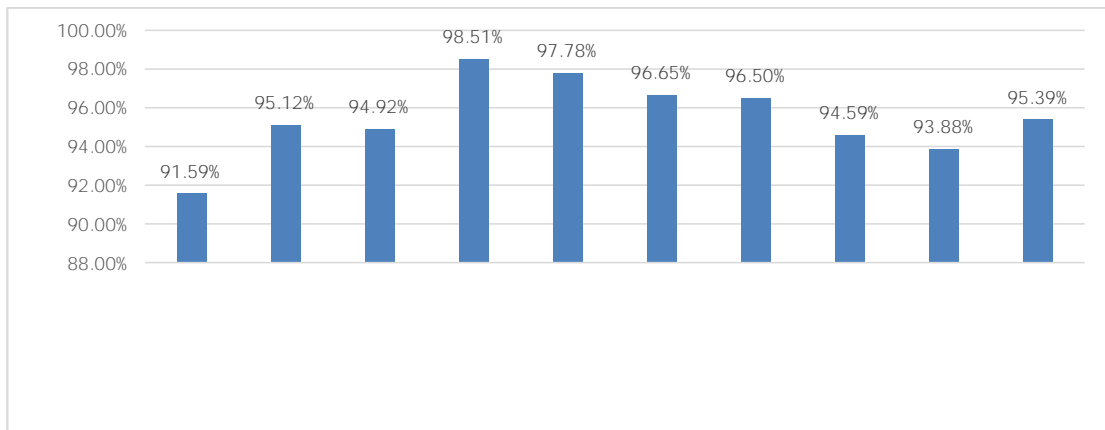
95.38%

2.

98.51%

97.78%

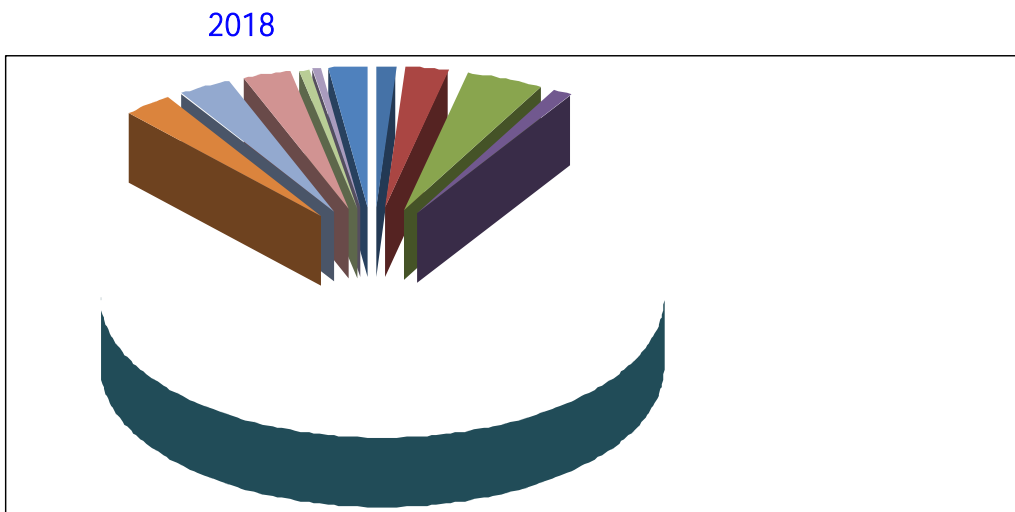
96.65%



2.

1.

2018



2.

2018

	2018	
	1248	52.13%
	172	7.18%
	264	11.03%
	386	16.12%
	109	4.55%
	33	1.38%
	6262	2.59%

2018

820

2018

1.

2018

2.

3.

2018

2019

4.

2018

2018

16

11

2018

43

2018

1.

2018

65.27%

32.32%

4.88%

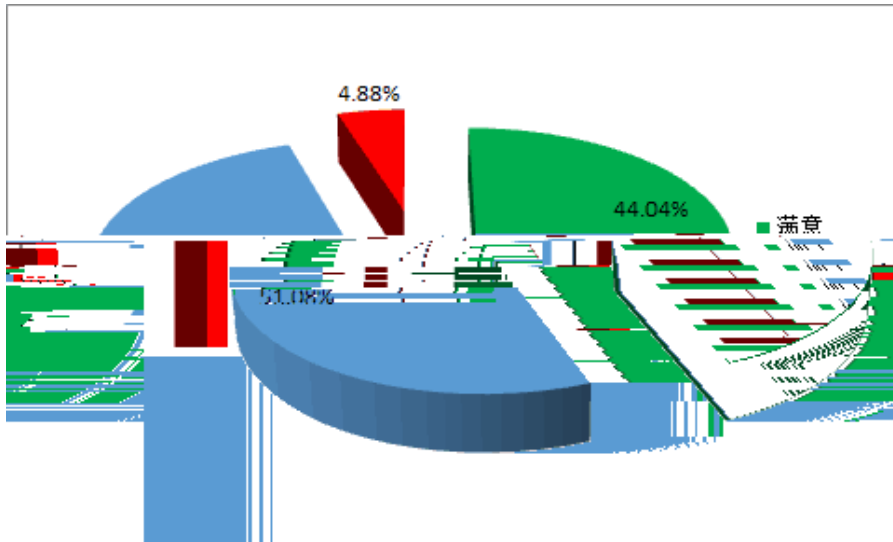
2018

95.12%

44.04%

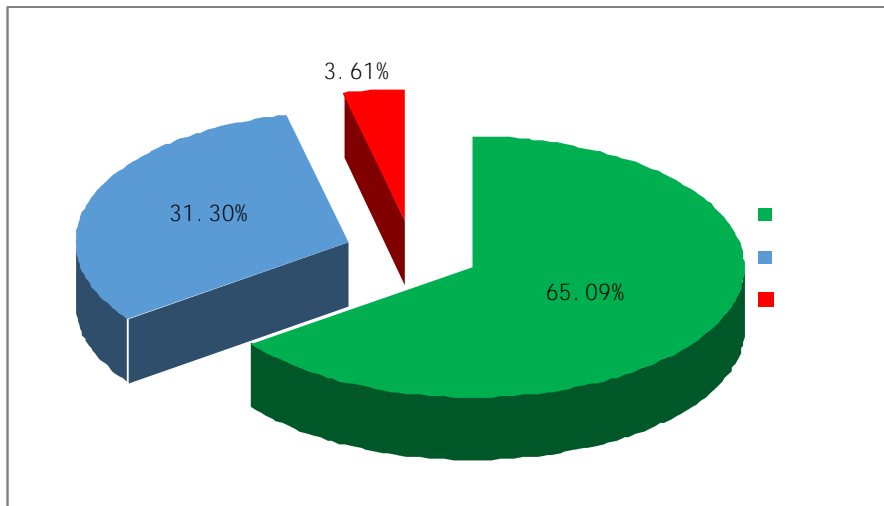
51.08%

2018



2.

2018



2018

96.39%

65.09%

31.30%

3.

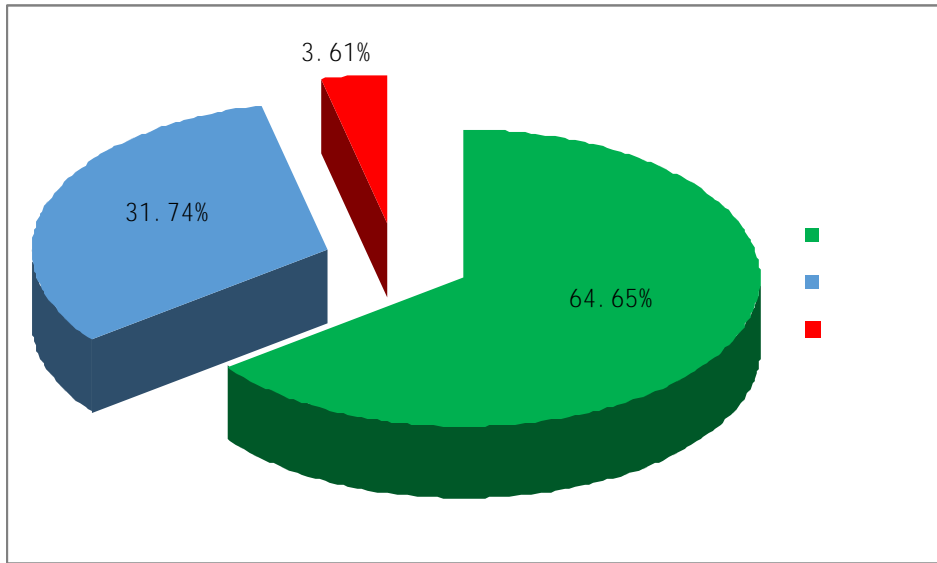
2018

96.39%

64.65%

31.74%

2018



4.

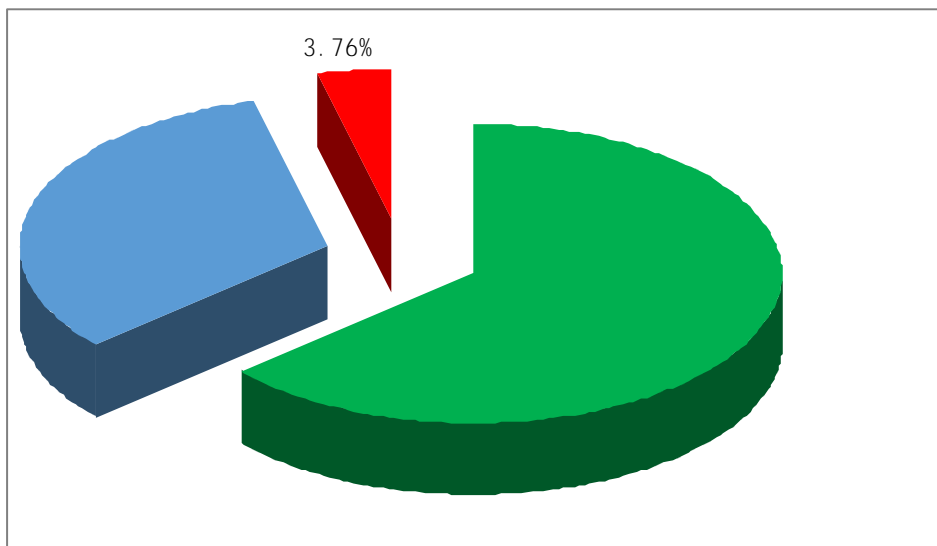
2018

96.24%

63.62%

32.62%

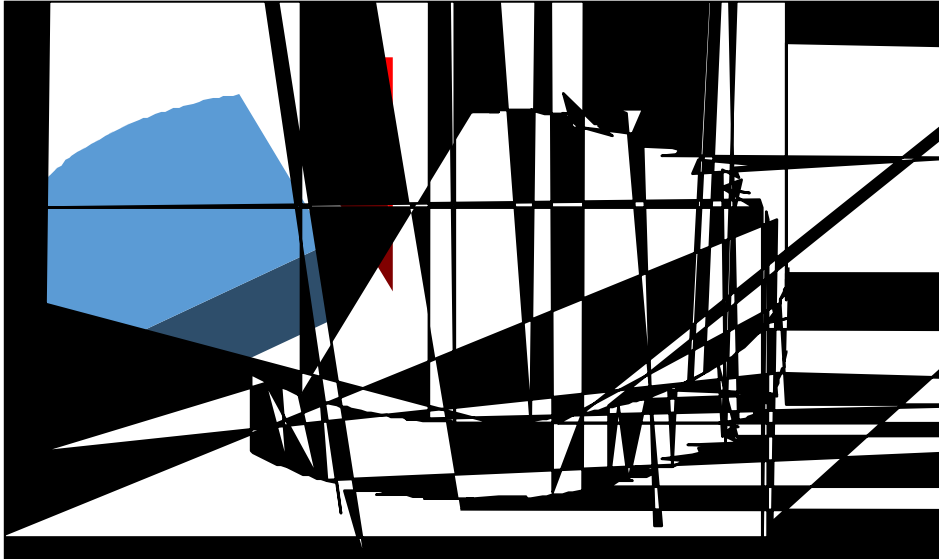
2018



5.

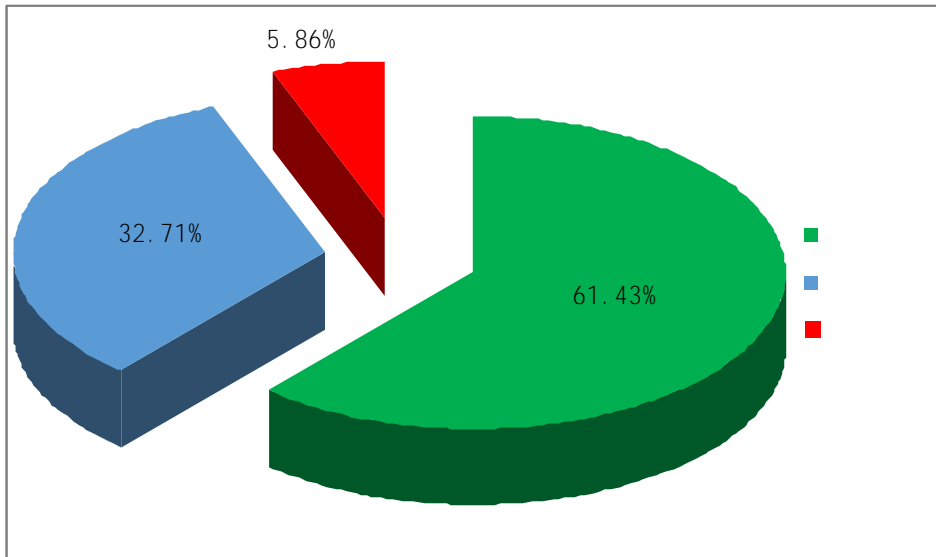
2018 95.37%
 63.09% 32.28%

2018



6.
 2018 94.14%
 61.43% 32.71%

2018



7.

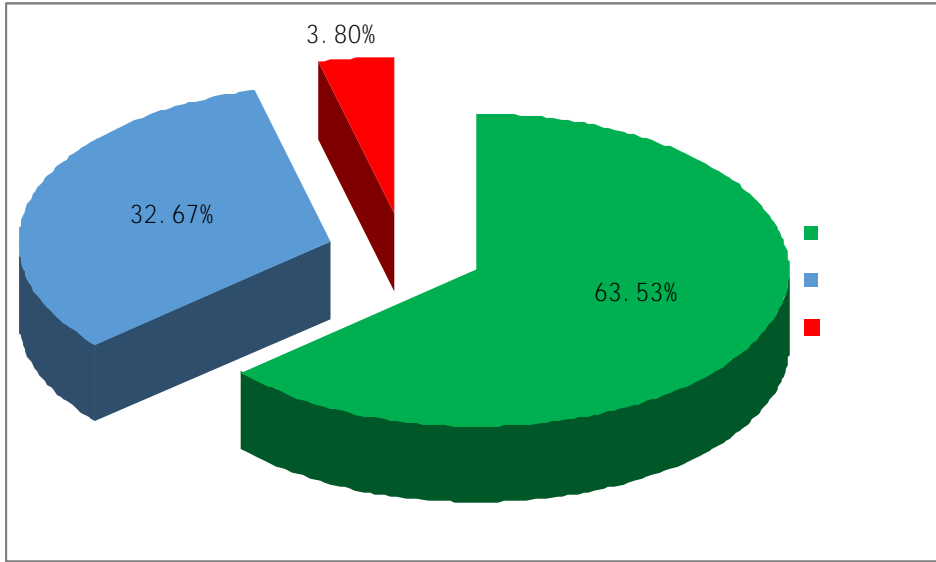
2018

96.20%

63.53%

32.67%

2018



8.

2018

96.98%

64.36%

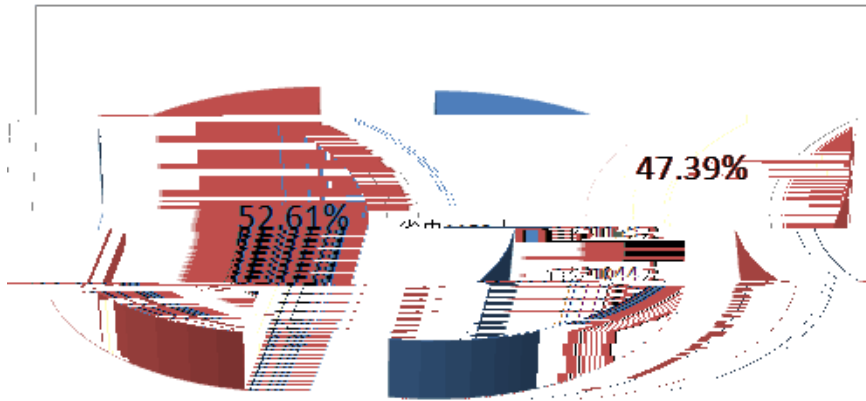
32.62%

2018

1.

2018

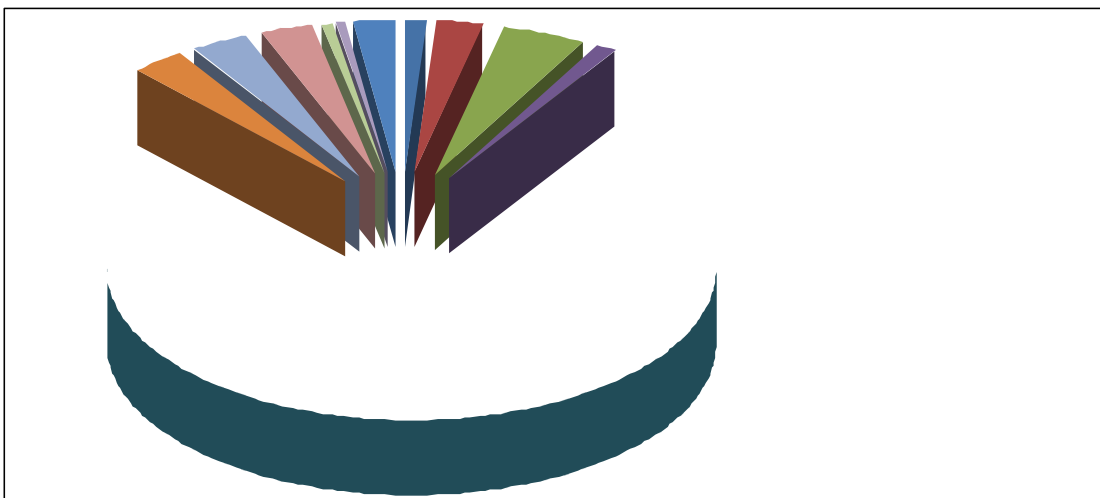
2017

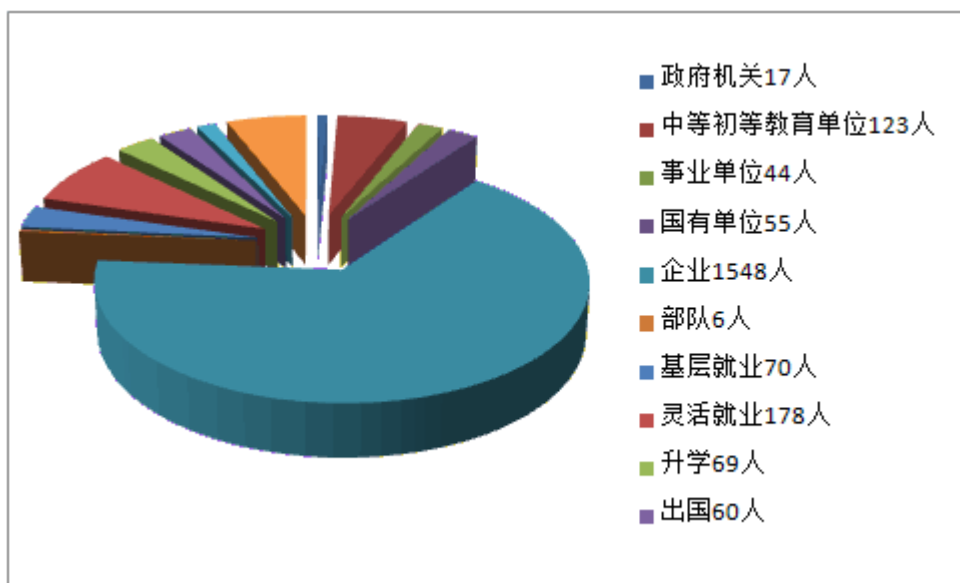


3.

2018

412 2017 389 2018
2017 23
2017 1603 2018 1916 2018 2017 313
2018



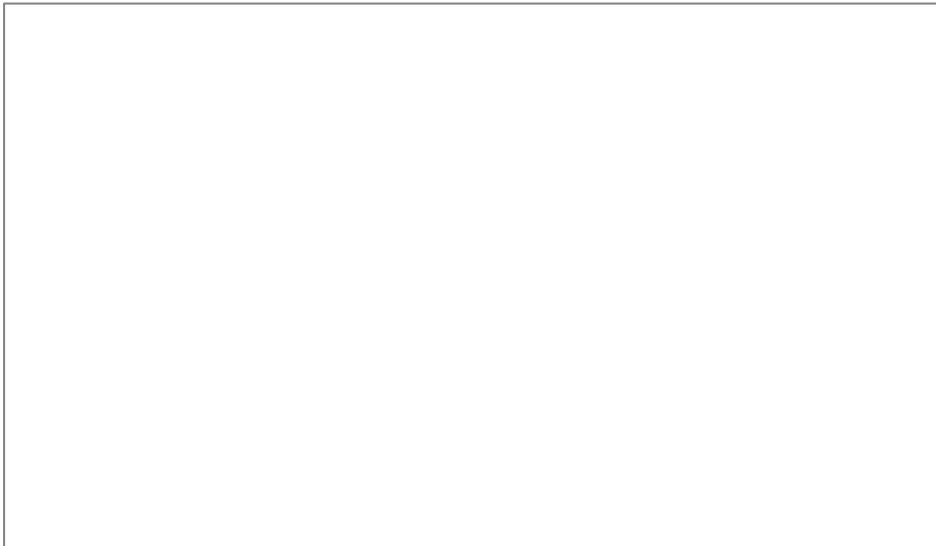


1.

2018
90.32%,
27.72% 9.68%

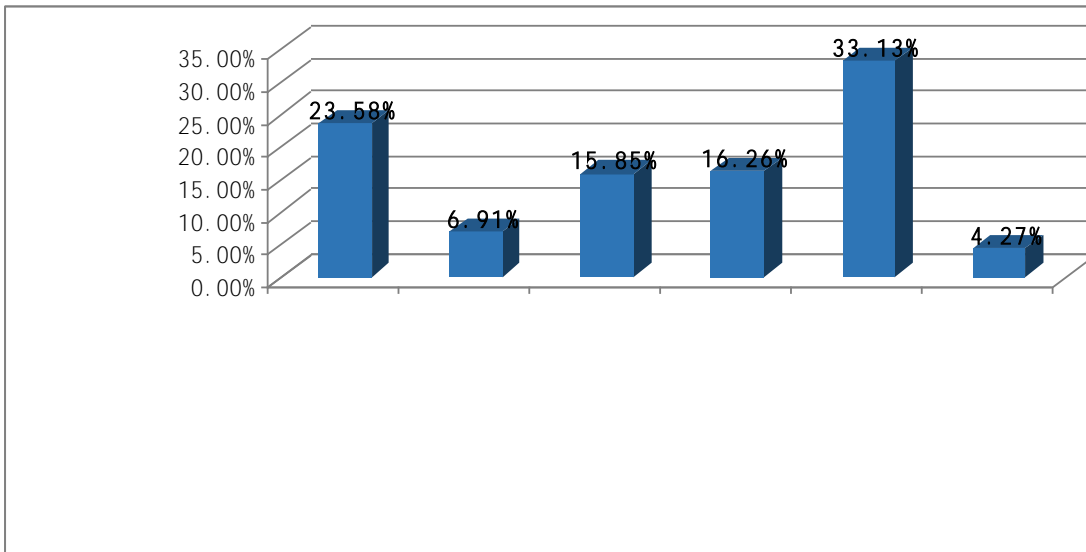
2018
62.60%

2018



33.13% 23.58%
15.85% 16.26%
6.91%

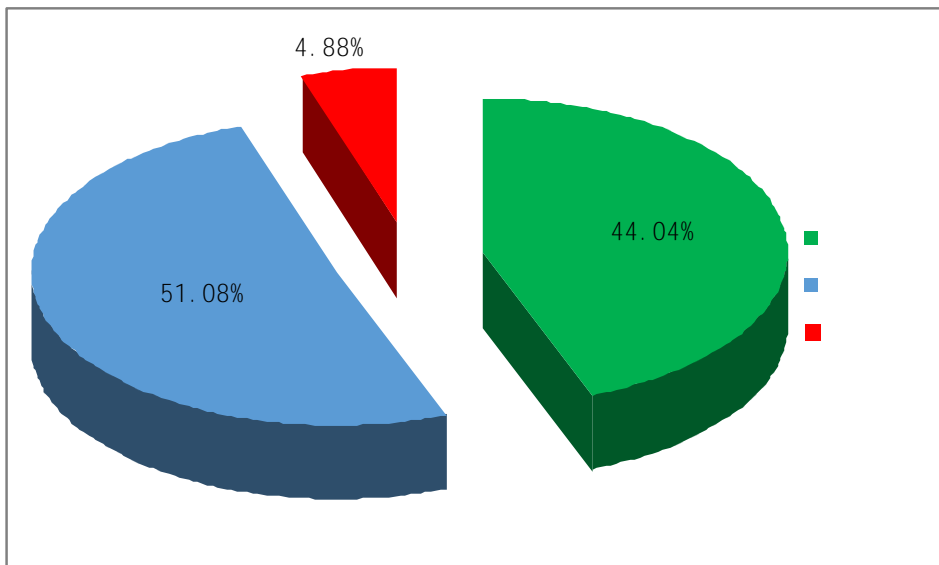
2018



2.

2018

2018



2018

2018

44.04%

51.08%

4.88%

2018

95.12%

1

2

3

4

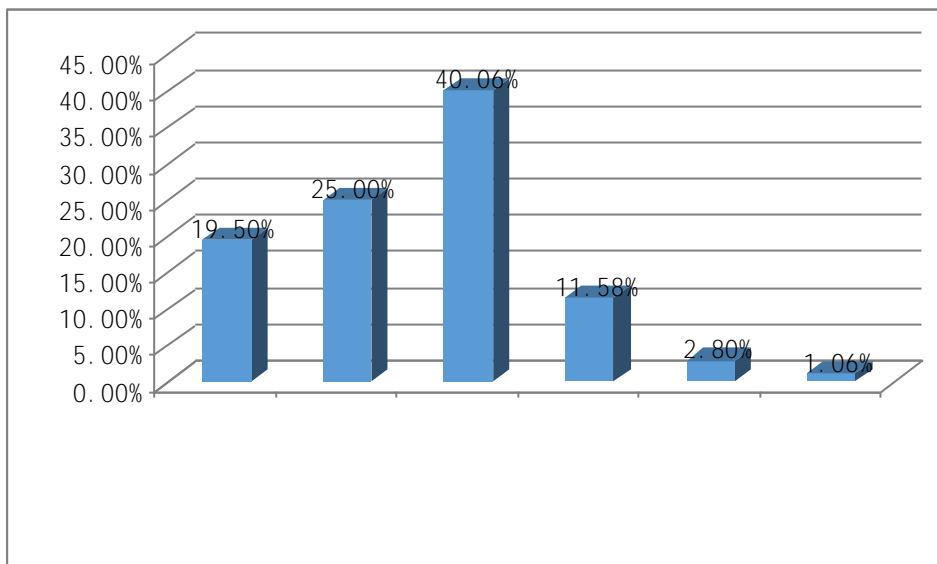
5

1.

2018

25.00%	40.06%	11.58%	19.50%	2.80%	1.06%
--------	--------	--------	--------	-------	-------

2018



2018

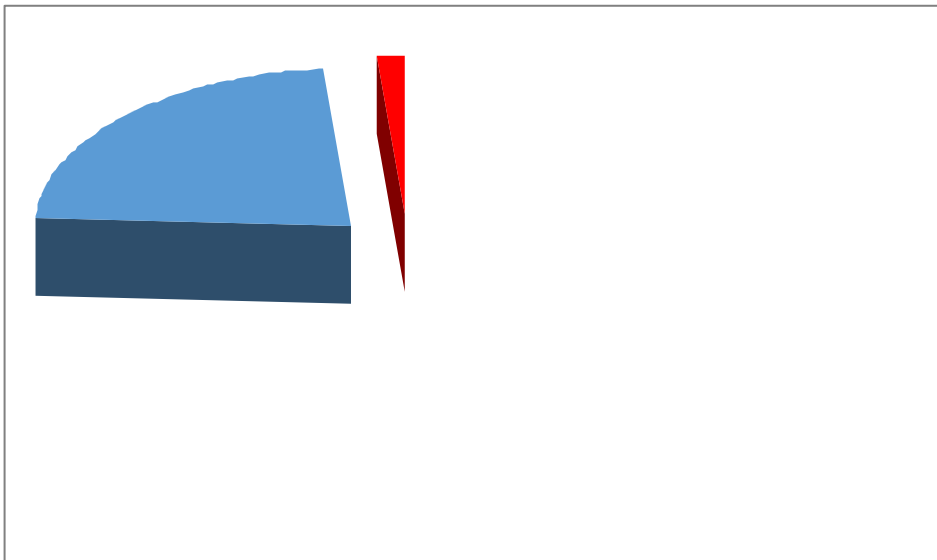


1.

2018

98.75%

2018

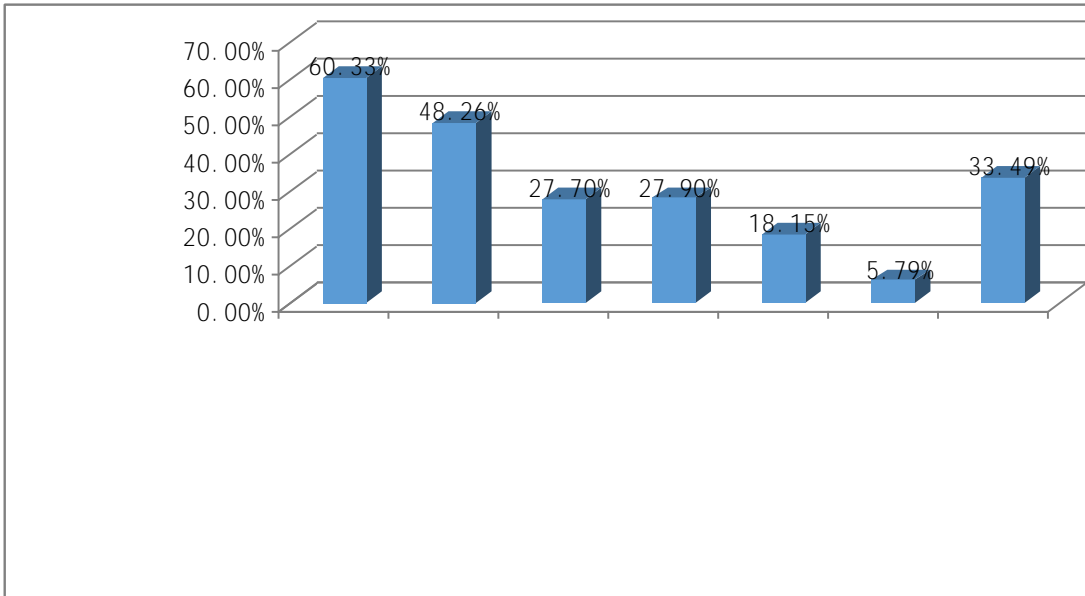


2018 , 75.77%

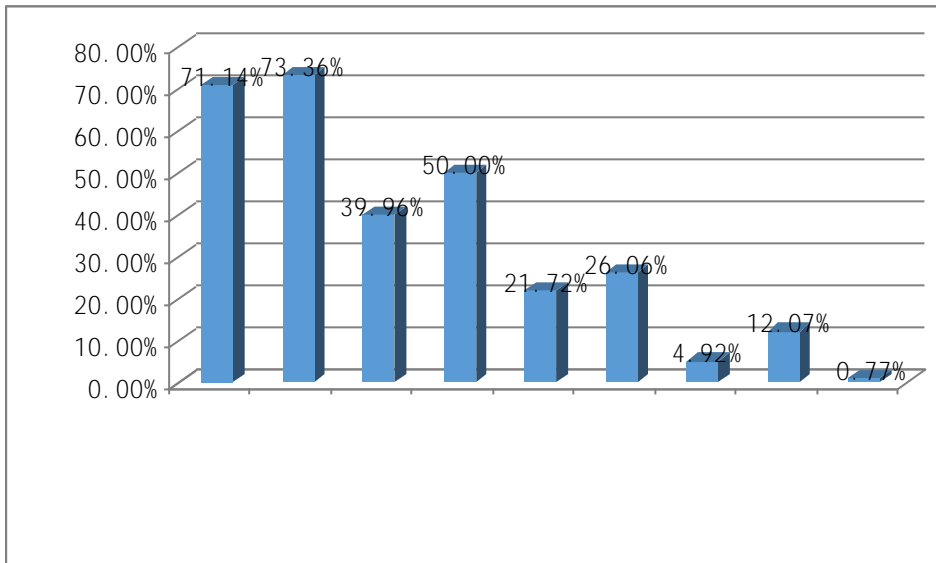
22.97%

..... 表 1.1.1.1.1

1.



2.



73.36%

71.14%

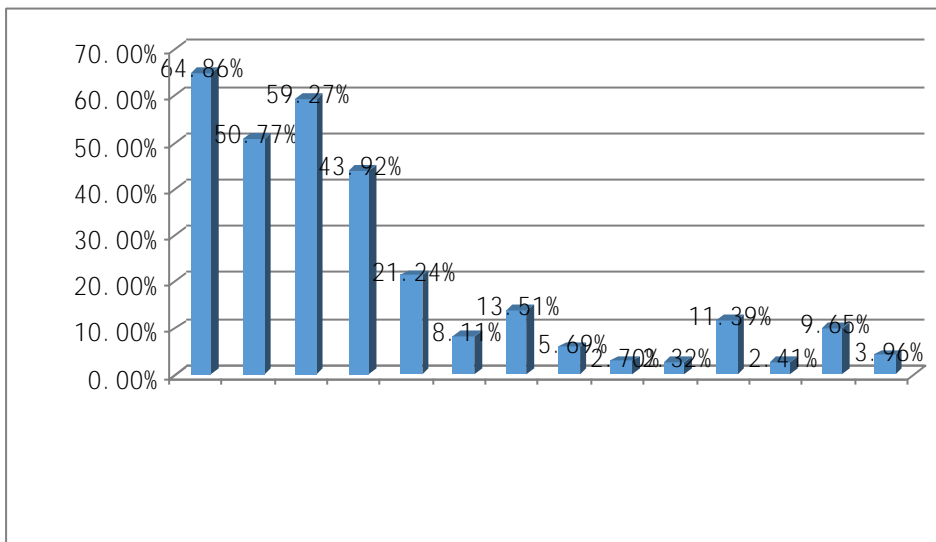
50.00%

39.96%

26.06%

12.07% 4.92%

3.

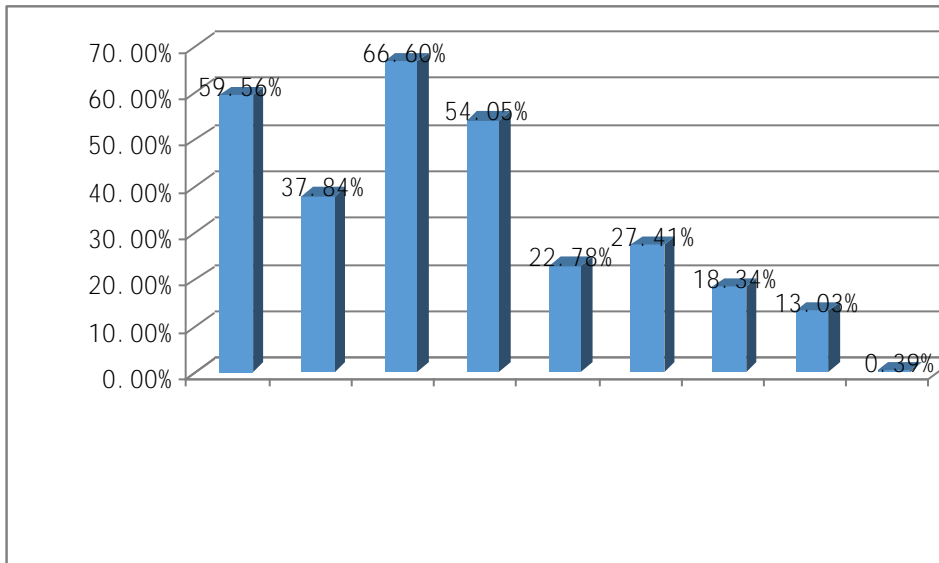


64.86%

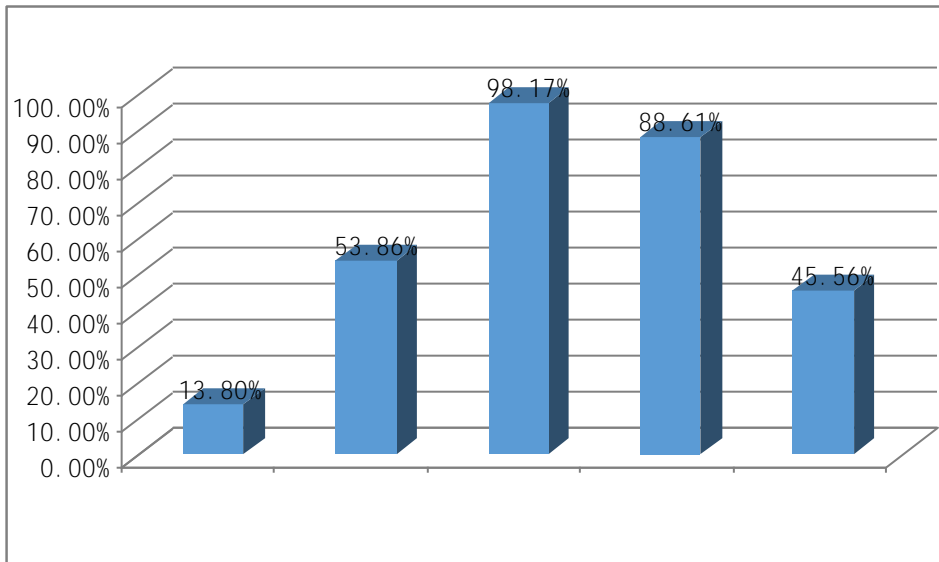
53.45%

50.77%

4.

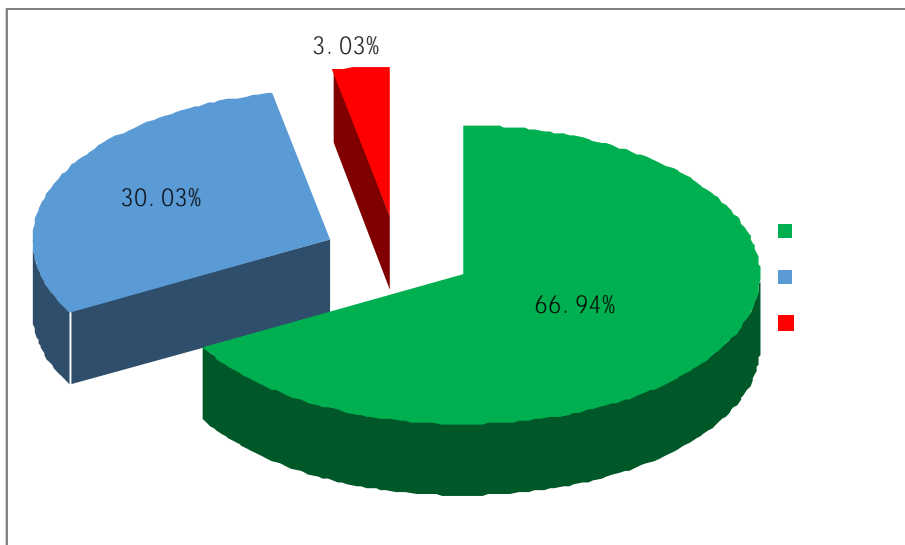


5.



1.

2018



2018

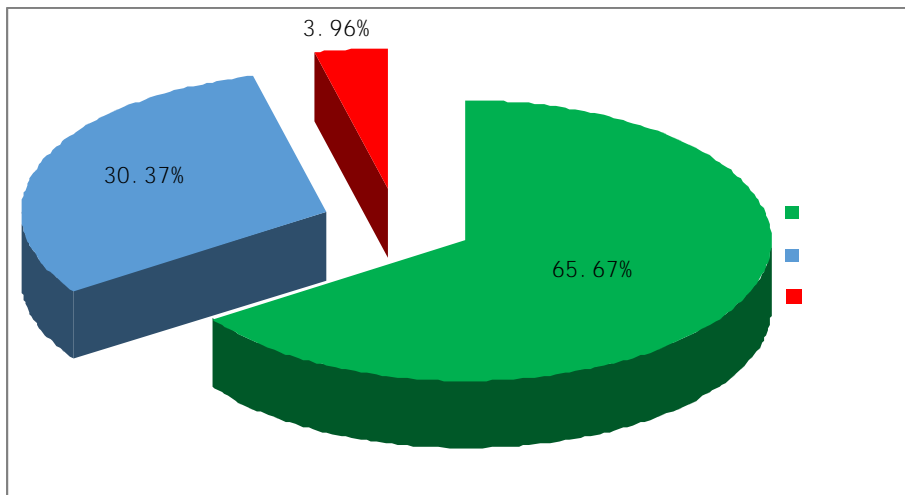
96.97%

66.94%

30.03%

2.

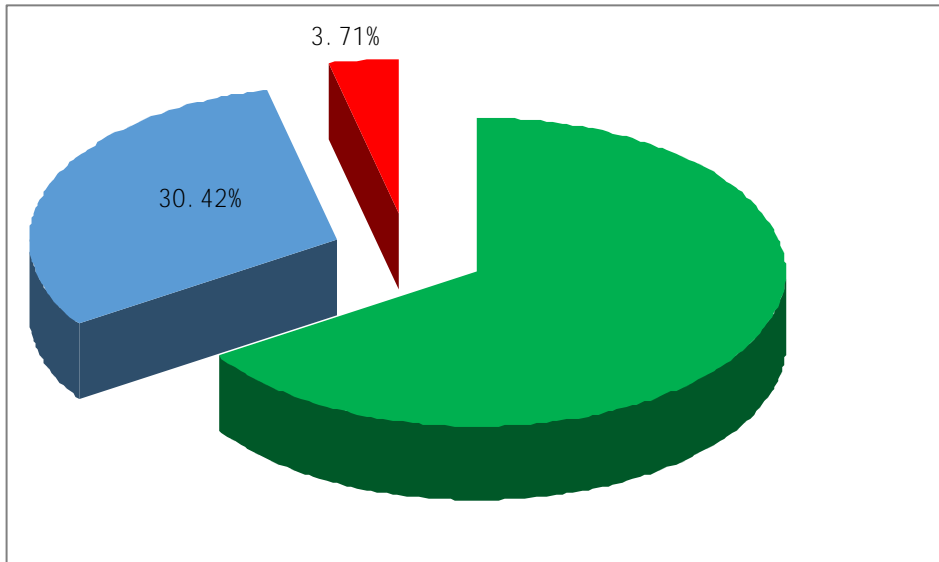
2018



2018
 96.04% 65.67% 30.37%

3.

2018



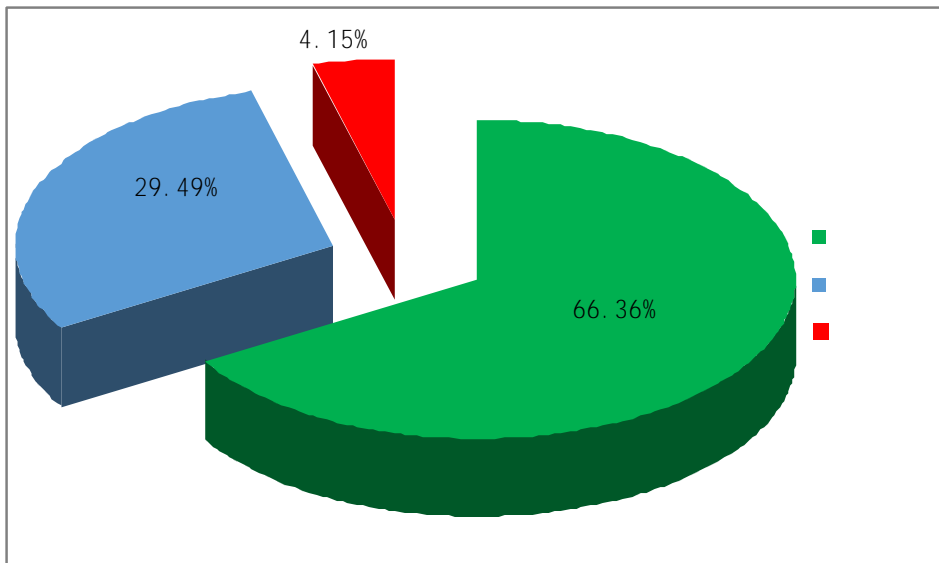
2018

96.29% 65.87%

30.42%

4.

2018



2018

95.85% 66.36%

29.49%

5.

2018

2018

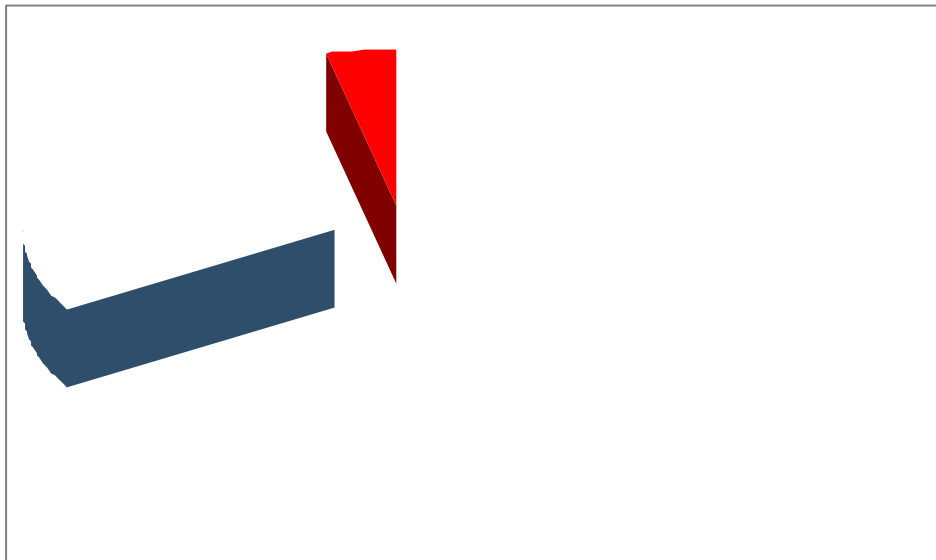
96.24%

65.48%

30.76%

6.

2018



2018

96.39%

66.31%

30.08%

1.

1.

2016

22 1950

7

68

19

2018